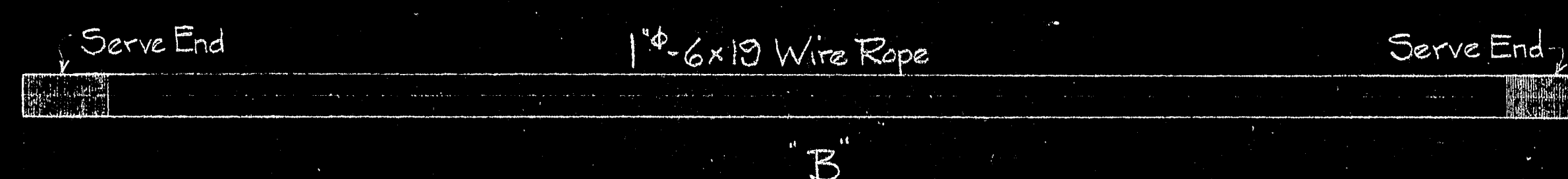
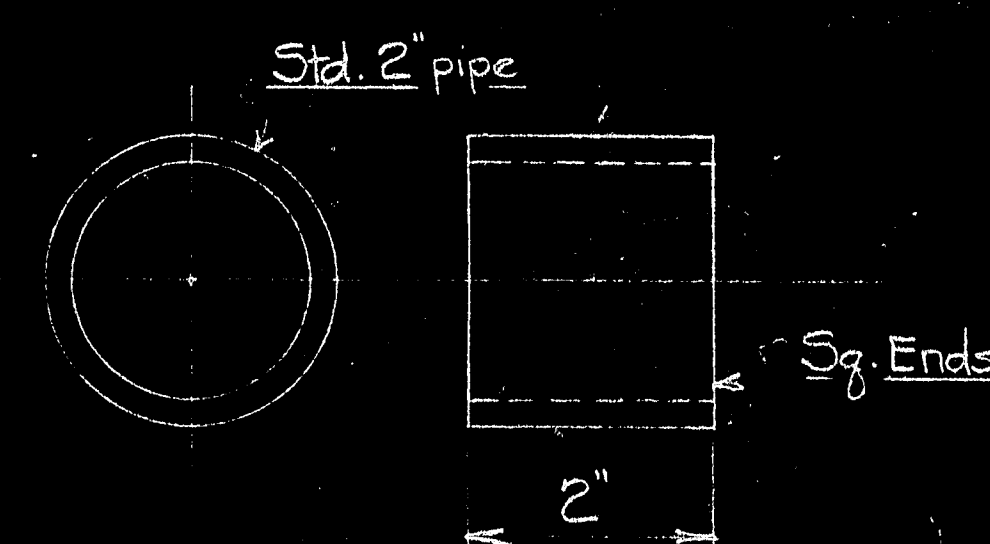


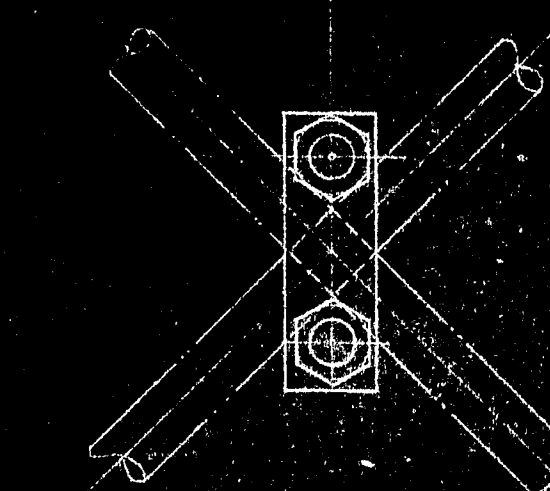
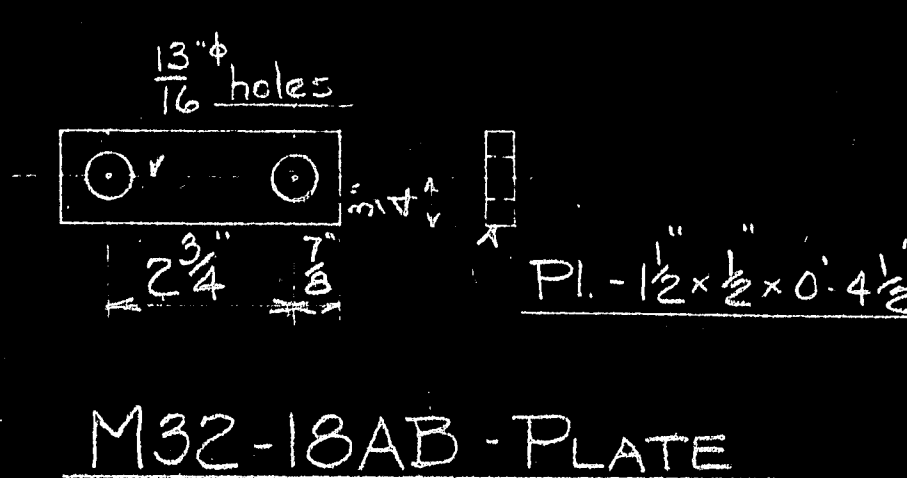
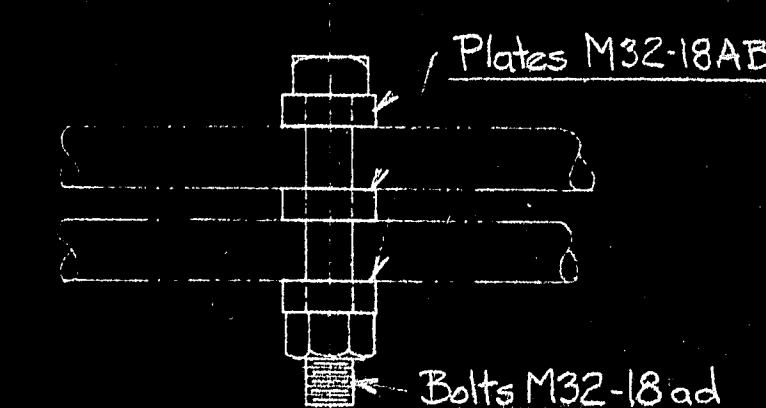
MARK	Nº REQD	"A"	LOCATION
M32-18A	4	245'-0"	Tower-11
M32-18B	4	205'-0"	Tower-13
M32-18C	4	190'-0"	Tower-21
M32-18D	4	230'-0"	Tower-23



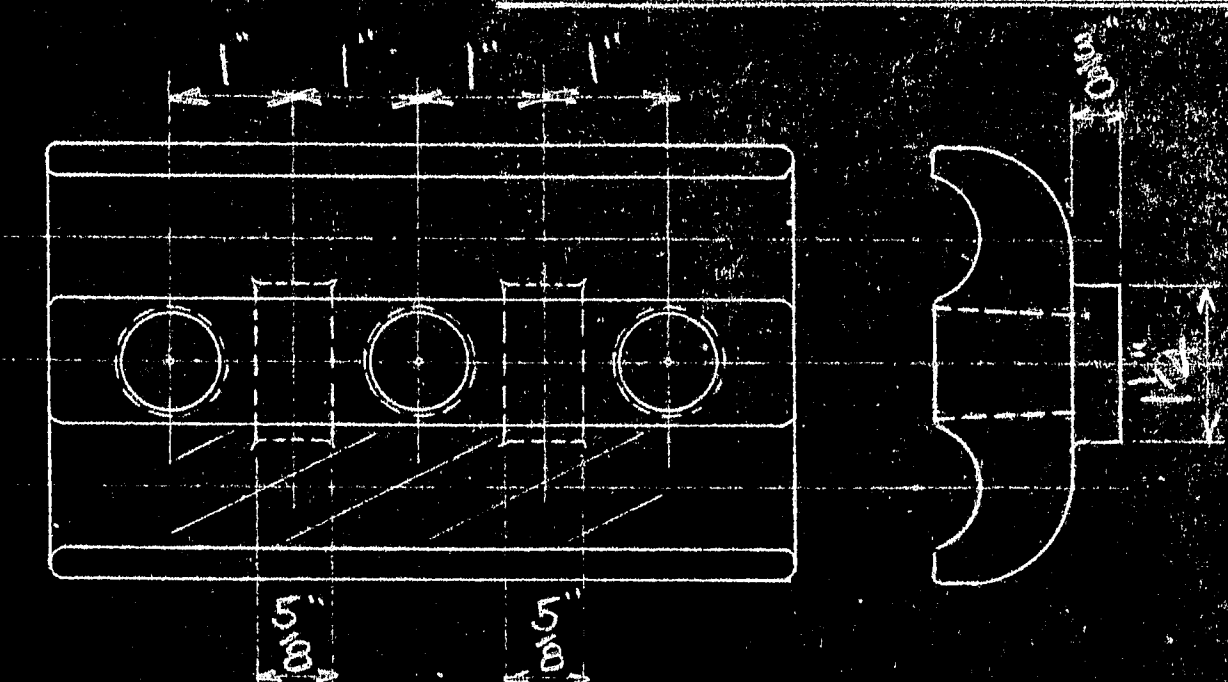
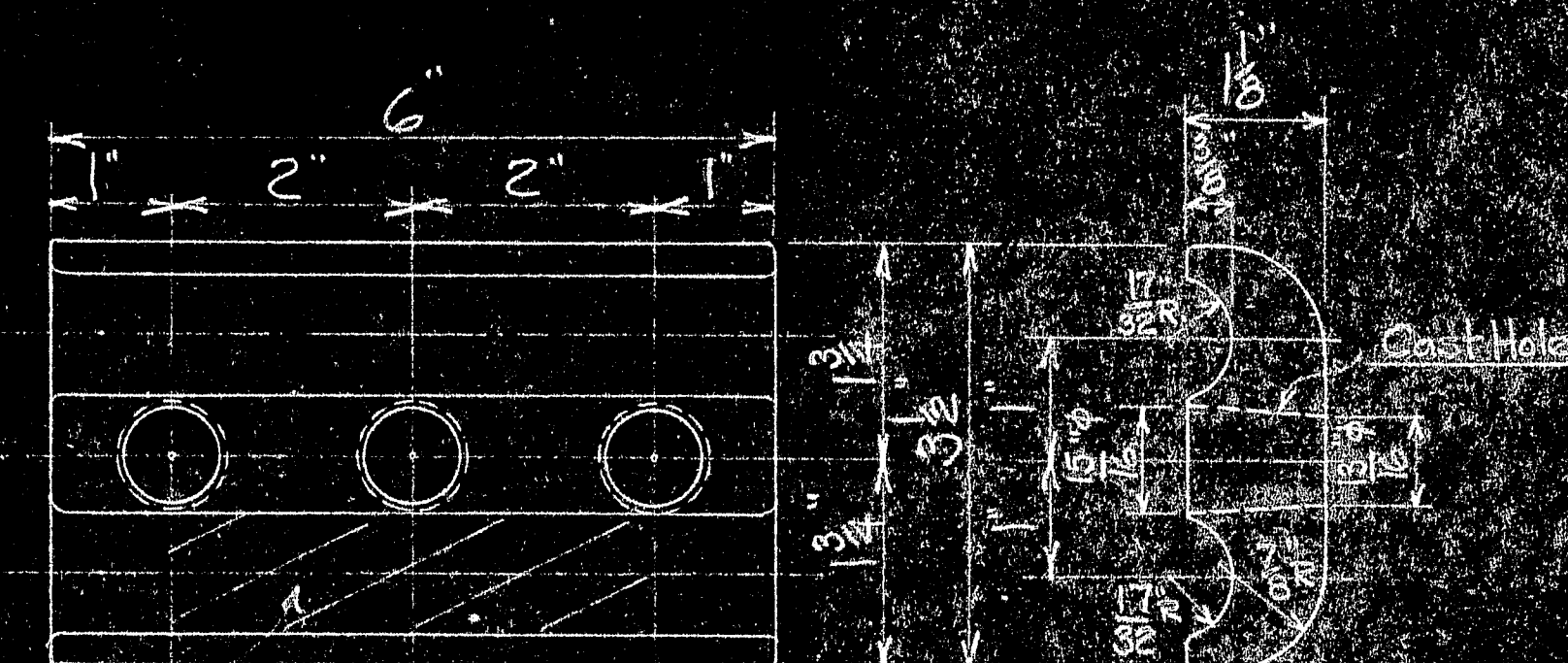
MARK	Nº REQD	"B"	LOCATION Bottom Top
M32-18E	4	100'-0"	6-8
M32-18F	4	105'-0"	7-9
M32-18G	4	108'-0"	8-10
M32-18H	4	116'-0"	9-11
M32-18J	4	150'-0"	10-13
M32-18K	4	93'-0"	10-8
M32-18M	4	98'-0"	11-9
M32-18N	4	124'-0"	13-10
M32-18P	4	129'-0"	21-24
M32-18R	4	101'-0"	23-25
M32-18S	4	142'-0"	24-21
M32-18T	4	95'-0"	24-26
M32-18U	4	109'-0"	25-23
M32-18V	4	92'-0"	25-27
M32-18W	4	102'-0"	26-24
M32-18X	4	97'-0"	27-25
M32-18Y	4	93'-0"	28-26
M32-18Z	4	90'-0"	29-27



M32-18AA - SPACER



CROSS CLAMP ASSEMBLY



M32-18AF - BOTTOM HALF CLAMP - 6 1/8 LAY  
Same as M32-18AE except as noted.  
M32-18AK - BOTTOM HALF CLAMP - 7 LAY  
Same as M32-18AJ except as noted.

M32-18AK	Class B Mechanite		Bottom Half Clamp - 7" lay
M32-18AJ	Class B Mechanite		Top Half Clamp - 7" lay
M32-18ag	1050	Steel 5311-13	2 Sq. Hd Bolt - 3 1/2" lg w/ Hex Nut
M32-18AF	345	Class B Mechanite 5314-13	Bottom Half Clamp - 6 1/8 Lay
M32-18AE	345	Class B Mechanite 5314-13	Top Half Clamp - 6 1/8 Lay
M32-18ad	325	Steel 5311-13	2 Sq. Hd Bolt - 5" lg w/ Hex Nut
M32-18AB	450	Steel 5310-13	Plate
M32-18AA	16	Pipe 5313	Spacer
M32-18Z	SEE TABLES 5313		Stays

MARK	REQ'D	MAT'L	REQ. NO.	NAME	REMARKS
BILL OF MATERIAL					
JOHN A. ROEBLING'S SONS CO., TRENTON, N. J.					
DEER ISLE BRIDGE					
TEMPORARY STAYS					
MISCELLANEOUS DETAILS					
APPROVED		SCALE 3"=1'-0"		SERIAL	SHEET
DES.		DR. 6-22-43		M32	18
CH. DR.		TR.			
ENG'R		CH.			

